

Job Name	
Order No.	

HITACHI

Submittal Data Sheet	RAD-GJ24QHAA
24,000 Btu/hr Ducted Indoor Unit	



Indoor Specifications				
Airflow Rate (cfm)	Cooling		Heating	
	H	M	H	M
	671	471	683	480
	L	SL	L	SL
318.1	206	327	212	
Sound (dBA) H / M / SL		Cooling	Heating	
		39/35/29	40/35/29	
Dimensions (W x H x D) (in)		35.43 x 10.62 x 28.34		
Weight (Lbs)		77		
ESP (in. WC)		0.6		
Nominal Capacity (Btu/hr)		24,000		

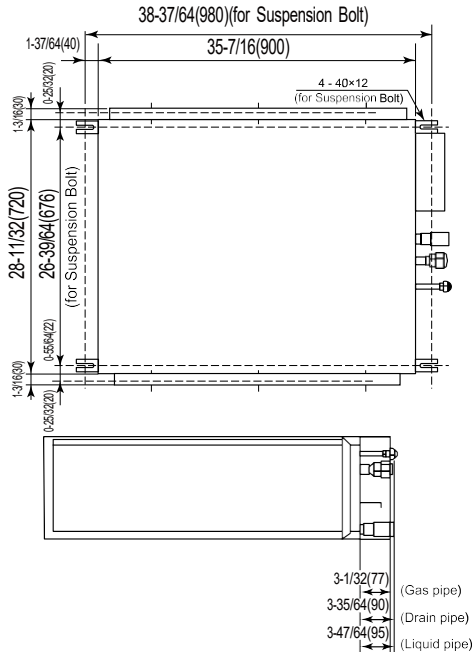
Recommended cable between Outdoor and Indoor 14AWG - 18AWG 4 conductors stranded copper wire and Power wiring cable size must comply with applicable national and local codes.

Electrical		
	Cooling	Heating
Running Current (Rated) (A)	1.4	
Power Consumption (Rated) (W)	Refer to Outdoor	

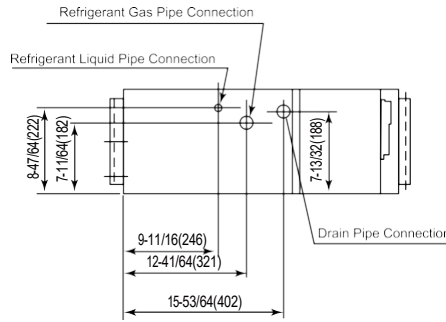
Piping	
Liquid (in)	1/4
Gas (in)	1/2
Drain (in)	1.26

Optional Accessories:	
Description	Part Number
Remote Controller with Receiver Kit	SPX-RKDN1
Remote Controller with Receiver Kit French	SPX-RKDN3
Wired Controller	SPX-URFG1
Wi-Fi Adapter	SPX-WFA01
Extension Cable for Wi-Fi Adapter	SPX-WFG58CM
H-Link Adapter IDU	PSC-6RAD
Adapter for Wired Remote Group Controller	SPX-DST1
26.2 ft (8m) Wire Cable for Distributor SPX-DST1	SPX-WDST8M
Dry Contact	SPX-WDC3
ON/OFF Status and Alarm Signal	SPX-WDC8
Float Switch (Included)	PMRAD-50DH7004

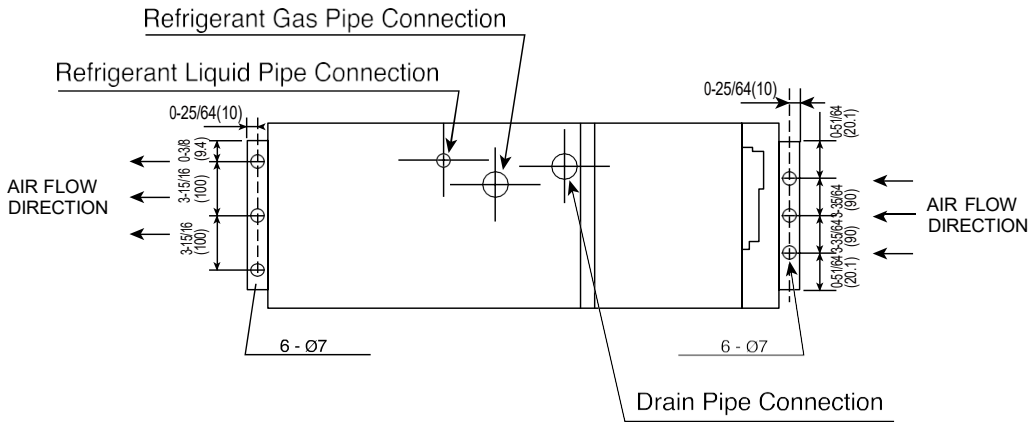
Unit: inch(mm)



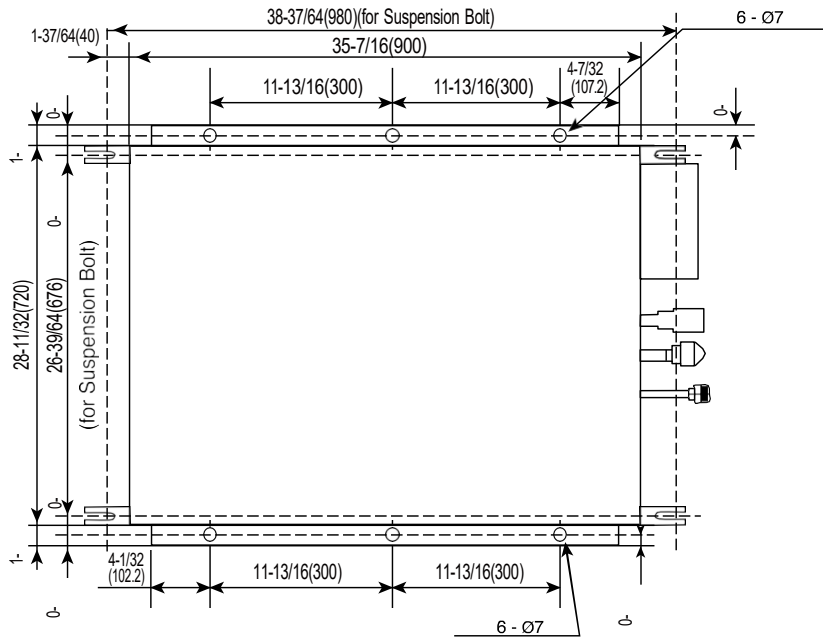
Factory default installation position is Back side suction.

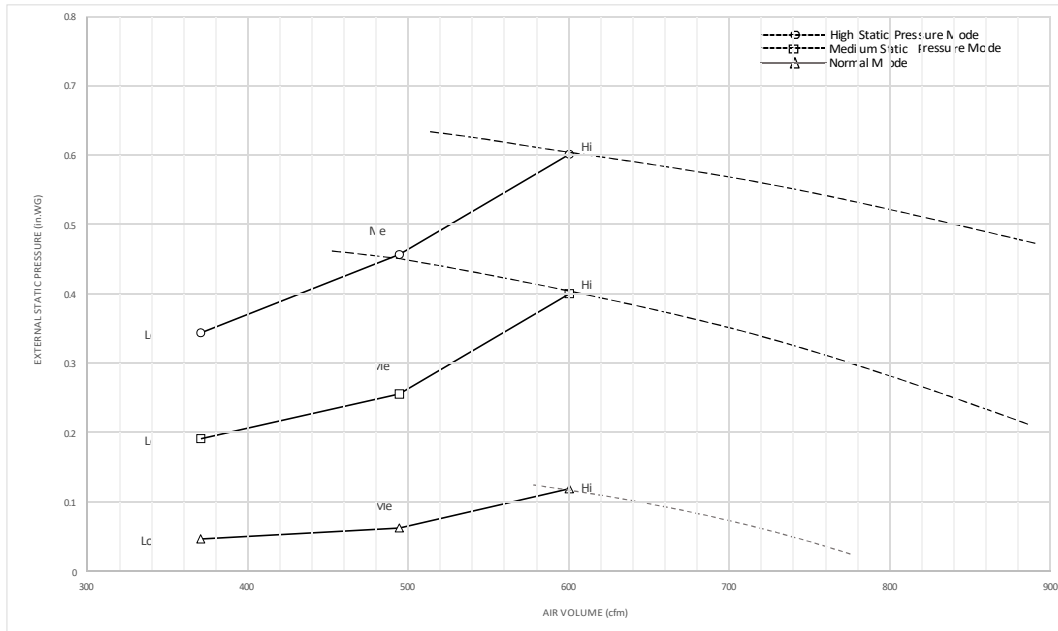


SIDE VIEW

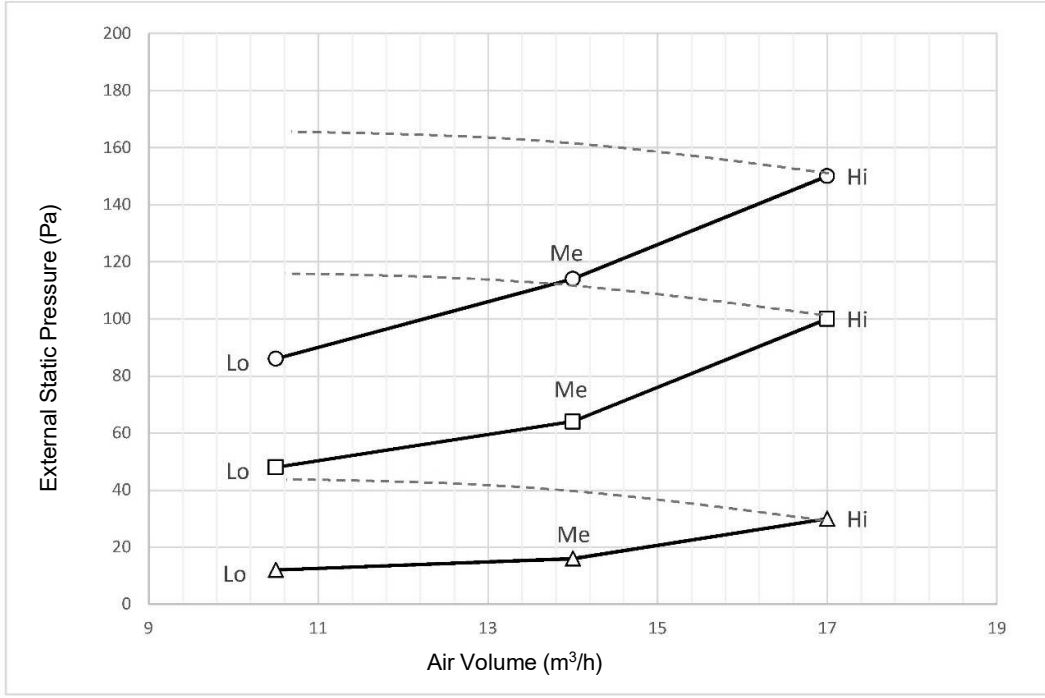


TOP VIEW





- High Static Pressure Mode
- Medium Static Pressure Mode
- △— Normal Mode



---○--- High Static Pressure Mode
 ---□--- Medium Static Pressure Mode
 —△— Normal Mode