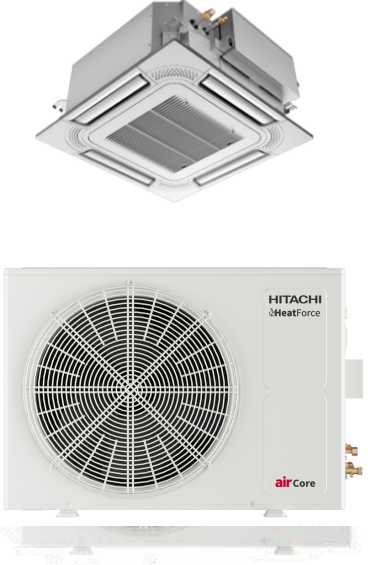


Job Name	
Order No.	

HITACHI

Submittal Data Sheet	PAS-12BLFASDQ1 / PCIM-B12UFA1DQ
12,000 Btu/hr Cassette Heat Pump System	



Efficiency

Cooling		Heating	
SEER2	24.9	HSPF2	11.3
EER2	16.5	COP	4.6

Performance

Cooling(Btu/hr)	
Rated(Min/Max)	12,000 (4,600/16,000)
Sensible @AHRI	9,070
Operating Range	0°F~115°F

Indoor: 80°F DB/67°F WB
Outdoor: 95°F DB/75°F WB

Heating(Btu/hr)	
1: @ 47° Rated (Min/Max)	14,000(4,800/2,0000)
2: @ 17° Rated	12,500
3: @ 5° Max: Capacity / COP	14,000/2.12
Operating Range	-13°F~75°F

- 1: Rated Heating Conditions:** Indoor: 70°F DB/60°F WB
Outdoor: 47°F DB/43°F WB
- 2: Rated Heating Conditions:** Indoor: 70°F DB/60°F WB
Outdoor: 17°F DB/15°F WB
- 3: Heating Conditions; Compressor Operating at Max Frequency:** Indoor: 70°F DB/60°F WB
Outdoor: 5°F DB/5°F WB

Electrical

	208/60/1	230/60/1
System MCA	13.9	13.9
System MFA	20	20
Compressor RLA	7.7	7.7
Outdoor fan motor FLA	0.34	0.34
Outdoor fan motor W	80	80
Indoor fan motor FLA	0.08	0.08
Indoor fan motor W	57	57

MFA: Max. fuse amps **MCA:** Min. circuit amps (A) **FLA:** Full load amps (A)
RLA: Rated load amps (A) **W:** Fan motor rated output (W)

Piping

Liquid (in)	1/4
Gas (in)	1/2
Drain (in)	1-3/16
Max. Interunit Piping Length (ft)	164
Max. Interunit Height Difference (ft)	98.4
Chargeless (ft)	98.4
Additional Charge of Refrigerant (oz/ft)	0.194

Indoor Specifications

Airflow Rate (cfm)	Cooling		Heating	
	Hi2	Hi	Hi2	Hi
	425	390	425	390
	M	L	M	L
	305	250	305	250
Sound (dBA)	46		46	
Dimensions (W x H x D) (in)	22-7/16x8-15/32x22-7/16			
Airflow Inlet (H x W) (in)	-			
Weight (Lbs)	34			

Outdoor Specifications

Compressor	KTN150D42UFZD	
Refrigerant	R32	
Factory Charge (Lbs)	2.65	
Refrigerant Oil	ESTER OIL VG74	
Airflow Rate (cfm)	Cooling	Heating
	1935	1935
Sound Pressure Level (dBA)	55	
Dimensions (W x H x D) (in)	[35-7/16]x[26-3/16]x[12-19/32]	
Weight (lbs)	97	

Recommended cable between Outdoor and Indoor 14AWG - 18AWG 4 conductors stranded copper wire and Power wiring cable size must comply with applicable national and local codes.

Optional Accessories:

DESCRIPTION	PART NUMBER
Wired Remote Controller	CIW03-H
Wireless Remote Controller	PC-LH8QE
airCloud Adapter	GA-WFG-N
Mini Central Controller	CCM01
Large Central Controller	CCL01
Central Touchscreen Controller	CCXL02
5 Wire Thermostat Adapter	C3STAT01
5 Wire Thermostat, Wi-Fi, Modbus/Bacnet Adapter	C4STAT01
Remote Control Cable 16.4 ft	PRC-5K
Remote Control Cable 32.8 ft	PRC-10K
Remote Control Cable 49.2 ft	PRC-15K
Motion Sensor Kit	SOR-NEZ
IR Receiver	PC-ALHC5Q
BACnet/Modbus Gateway	HBN200-PRO
4-Way Cassette Panel	PHKM50PAQ1
Condensate Pump	Included
Float Switch	Included
Auxiliary Heat CN25 connector	PCC-CN1925-H
Remote Sensor	THM-R2A

Dimensional Data:

Indoor Unit:

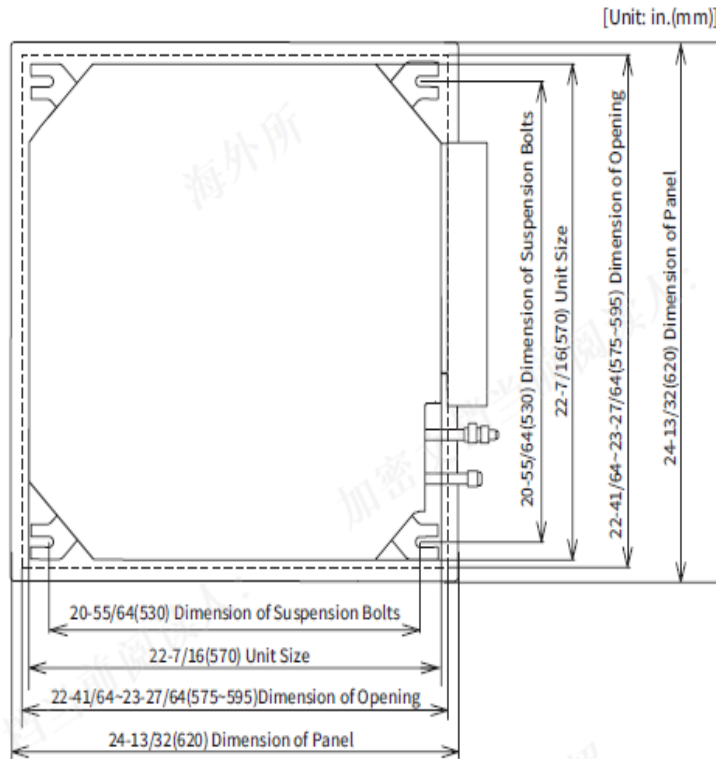
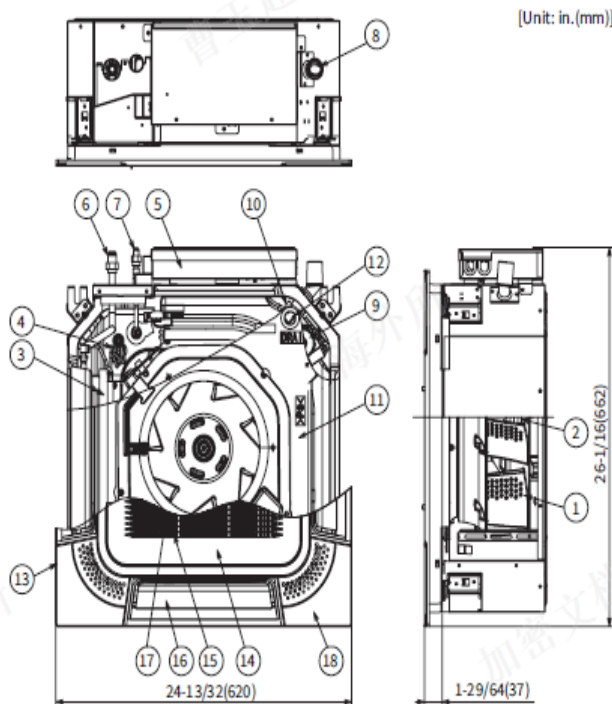


Fig. 3.3 Opening of False Ceiling and Suspension Bolts

Name of Parts

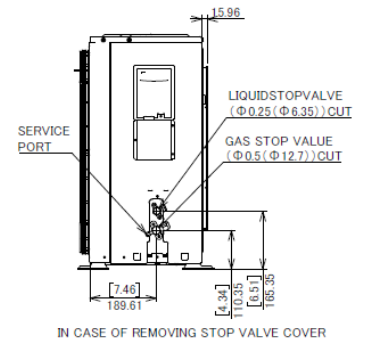
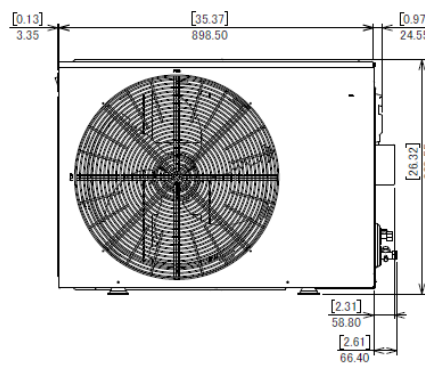
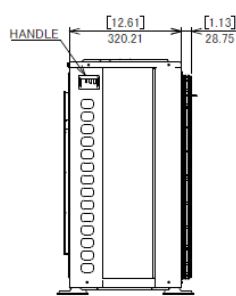
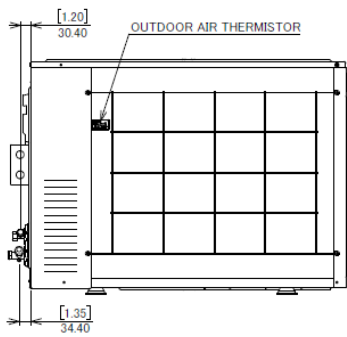
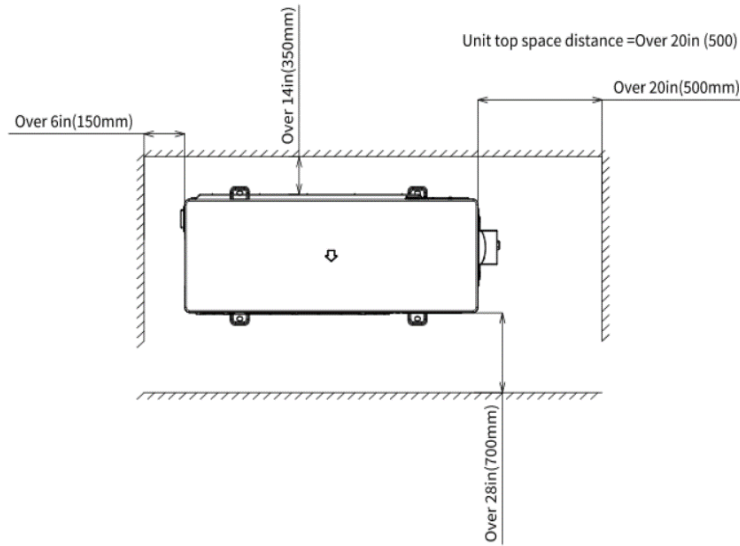


Item.	Part Name
1	Fan
2	Fan Motor
3	Heat Exchanger
4	Distributor
5	Electrical Box
6	Refrigerant Gas Pipe Connection
7	Refrigerant Liquid Pipe Connection
8	Condensate Pipe Connection
9	Drain Discharge Mechanism
10	Float Switch
11	Drain Pan
12	Rubber Plug for Drain
13	Air Panel PHKM50PAQ1
14	Air Inlet Grille
15	Air Filter
16	Air Outlet
17	Air Inlet
18	Cover for Corner Pocket

Outdoor Unit:

B框

MINIMUM SPACE FOR AIR PASSAGE



4-HOLES FOR FOUNDATION BOLDS
5/16 OR 3/8 (M8 OR M10)

