



JADE Ventilation Control Y-Pac Selection Tool



RSD-TC



Jade System Components

- The JADE™ Economizer System includes an Economizer Module, 20k mixed air sensor, damper actuator,
- optional CO2 sensor,
- and either a 20k outdoor air temperature sensor or
- Sylk Bus sensors for measuring outside air and return air enthalpy, temperature, and humidity
- Jade System (Y-Pac) has 5 year warranty.

I SEE



I NEED TO QUOTE



YL7220AJ3103

- YL7220AJ3103 kit includes:
 - 1 - W7220A1000 Jade Controller
 - 1 - C7250A1001 Mixed Air Temperature Sensor
 - 1 - C7250A1001 Outside Air Temperature
 - 1 - MS3103J1030 27 lb-in Direct Coupled Actuator
Sylk Enhanced Communicating



YL7220AJ3105

- YL7220AJ3105 kit includes:
 - 1 - W7220A1000 Jade Controller
 - 1 - C7250A1001 Mixed Air Temperature Sensor
 - 1 - C7250A1001 Outside Air Temperature
 - 1 - MS3105J3030 44 lb-in Direct Coupled Actuator Syk Enhanced Communicating



YL7220S7503

- YL7220S7503 kit includes:
 - 1 - W7220A1000 Jade Controller
 - 1 - C7250A1001 Mixed Air Temperature Sensor
 - 1 - C7400S1000 Outside Air Temperature and Humidity Sensor for Enthalpy
 - 1 - MS7503A2030 27 lb-in Direct Coupled Actuator Non Communicating



YL7220SJ3103

- YL7220SJ3103 kit includes:
 - 1 - W7220A1000 Jade Controller
 - 1 - C7250A1001 Mixed Air Temperature Sensor
 - 1 - C7400S1000 Outside Air Temperature and Humidity Sensor for Enthalpy
 - 1 - MS3103J1030 27 lb-in Direct Coupled Actuator Sylk Enhanced Communicating



Y7220A7215

- Y7220A7215 kit includes:
 - 1-W7220A1000 Jade Controller
 - 2-C7250A1001 Temperature Sensors
 - 1-W7215A1008 25 lb-in Black Box Economizer Mod Motor with 2-10 vdc



Y7220S7215

- Y7220S7215 kit includes:
 - 1 - W7220A1000 Jade Controller
 - 1 - C7250A1001 Mixed Air Temperature Sensor
 - 1 - C7400S1000 Outside Air Temperature and Humidity Sensor for Enthalpy
 - 1 - M7215A1008 25 lb-in Black Box Economizer Mod Motor with 2-10 vdc

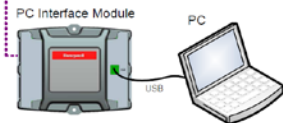


YL7220A7503

- YL7220A7503 kit includes:
 - 1 - W7220A1000 Jade Controller
 - 1 - C7250A1001 Mixed Air Temperature Sensor
 - 1 - C7250A1001 Outside Air Temperature
 - 1 - MS7503A2030 27 lb-in Direct Coupled Actuator Non Communicating



Honeywell Jade Components



- W7220A1000 Jade Controller
- C7250A1001 Mixed Air Temperature & Outside Air Temperature Sensor
- C7400S1000 Outside Air Temperature and Humidity Sensor for Enthalpy
- MS7405A2030 27 lb-in Direct Coupled Actuator Non Communicating
- MS3103J1030 27 lb-in Direct Coupled Actuator Sylk Enhanced Communicating
- MS3105J3030 44 lb-in Direct Coupled Actuator Sylk Enhanced Communicating
- W7215A1008 25 lb-in Black Box Economizer Mod Motor
- 50053060-001/U-DUCT MTG KIT
- 50048926-001/U 2 pin edge connector sensor
- 50048926-002/U 6 pin edge connector for field wiring
- W7220PC-MOD PC to Jade interface



What I should also offer that provides value

- 50053060-001/U-DUCT MTG KIT
- CO2 DCV Sensors
- T7350H 365 Day programmable energy saving thermostat
- Damper replacement
 - Rectangular or round
- Submeters
- Jade PC Tool

